



The Gibraltar Parliament

QUESTION No: 134/2019

Questioner: The Hon R M Clinton

Can the Government advise how it intends to recover the £14,187,808.47 owed by Midtown Coach and Car Parks Limited to Gibraltar Car Parks Limited?

ANSWER

THE HON THE CHIEF MINISTER

Mr Speaker,

Answer to Question 131

44 parking spaces at Midtown Coach and Car Park were sold for £18,000 as these are narrower than the standard parking.

Answer to Question 132

The floor plans and pricing schedule requested is now being handed out.

Answer to Question 133

The price criteria of the spaces is as follows:

- £15,000 - uncovered spaces
- £18,000 - reduced width spaces (2.2m wide standard spaces are 2.4m)
- £20,000 - standard spaces
- £22,500 - larger spaces

Answer to Question 134

I presume question 134 was asked when Midtown Coach and Car Park Ltd was owned by a third party, Midtown Coach and Car Park (Holdings) Limited. Midtown Coach and Car Parks Limited was acquired by Gibraltar Car Parks Limited on 28th February 2018.

The loan outstanding represents the debt owing over the cost of construction less any sales proceeds and associated cost, which will be repaid from rental and other income associated with the operation of the Car Park.

WRITTEN

NO. W66 OF 2018**Oral Question No. 621/2018 converted into written answer in accordance with Standing Order 16(2).****THE HON R M CLINTON**

Further to question 560/2017 can the Government provide a breakdown of the revenue generated from the sale of 456 car parking spaces at Midtown Coach & Car Parks of £9,029,500 showing numbers of spaces sold by price?

ANSWER

Mr Speaker,

I will answer this question together with questions 622 to 625.

NO. W70 OF 2018

Oral Question No. 625/2018 converted into written answer in accordance with Standing Order 16(2).

THE HON R M CLINTON

Can the Government advise if any car parking spaces at Midtown Coach & Car Parks were pre sold via a form of private placement and allocated to purchasers before opening the sale to the general public?

ANSWER

Mr Speaker,

Answers to questions 621 to 625

Gibraltar Car Parks paid £2,000 for the 2,000 ordinary shares.

On acquisition by Gibraltar Car Parks Limited, Midtown Coach & Car Parks Limited owed £14,187,808.47 to Gibraltar Car Parks Limited in respect of the financing provided by Gibraltar Car Parks Limited.

In addition, Midtown Coach & Car Parks Limited had additional minor liabilities totalling £7,666 in respect of secretarial, legal and accounting fees.

Breakdown of revenue generated by number of spaces sold by price

Price of Car Parking Space	No. Of Spaces Sold	Total Revenue
£15,000	21	£315,000
£17,500	2	£35,000
£18,000	44	£792,000
£20,000	348	£6,960,000
£22,500	39	£877,500
£25,000	2	£50,000

Contd....

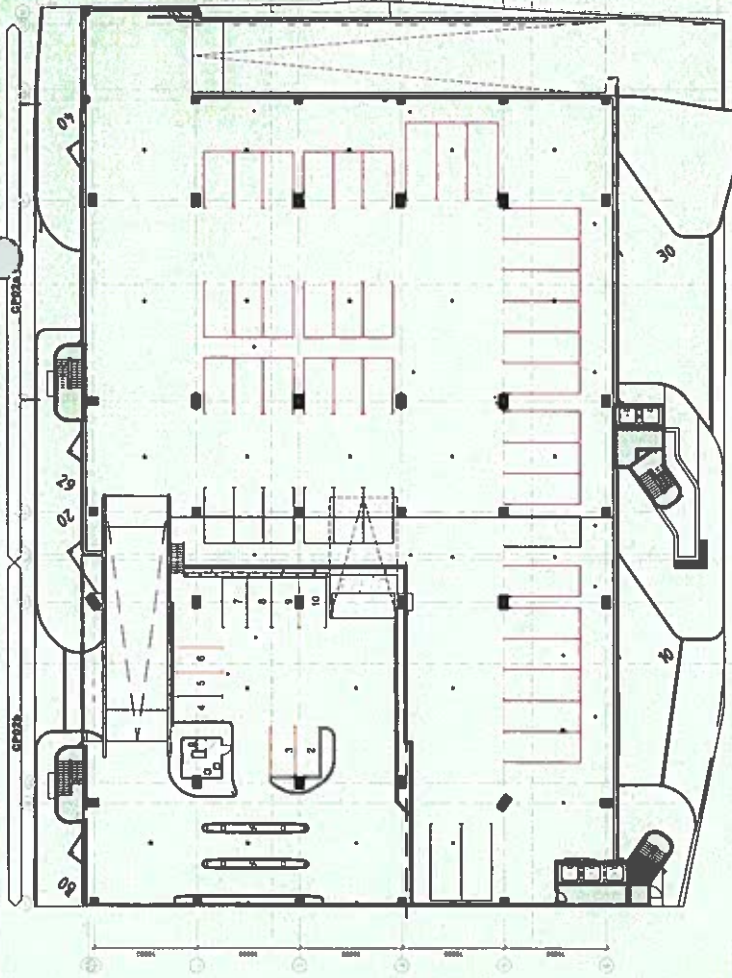
Contd answer to Question W70
Contd answer to Questions 621 to 625

The developer consulted with Government in arriving at the pricing structure for the sale of car parking spaces at Midtown Coach & Car Parks.

HMGOG did not pre-sell any spaces at Midtown Coach & Car parks via a form of private placement before opening the sale to the general public.

HMGOG did not allocate car parking spaces to purchasers before opening the sale to the general public.

Answer to Question 134 Answer to Question 132



1. Parking layout - CP02a & CP02b
Scale: 1:200



2. Parking layout CP03a & CP03b
Scale: 1:200

- Parking Allocation Legend**
- municipal parking
 - public parking
 - private parking
 - electric car charging point (public)
 - accessible space (public)

Project Name	Client	Scale
CONSTRUCTION	1. Building Services Group, CP01, CP02, CP03, CP04, CP05, CP06, CP07, CP08, CP09, CP10, CP11, CP12, CP13, CP14, CP15, CP16, CP17, CP18, CP19, CP20, CP21, CP22, CP23, CP24, CP25, CP26, CP27, CP28, CP29, CP30, CP31, CP32, CP33, CP34, CP35, CP36, CP37, CP38, CP39, CP40, CP41, CP42, CP43, CP44, CP45, CP46, CP47, CP48, CP49, CP50, CP51, CP52, CP53, CP54, CP55, CP56, CP57, CP58, CP59, CP60, CP61, CP62, CP63, CP64, CP65, CP66, CP67, CP68, CP69, CP70, CP71, CP72, CP73, CP74, CP75, CP76, CP77, CP78, CP79, CP80, CP81, CP82, CP83, CP84, CP85, CP86, CP87, CP88, CP89, CP90, CP91, CP92, CP93, CP94, CP95, CP96, CP97, CP98, CP99, CP100	1:200

CONSTRUCTION

1. Building Services Group, CP01, CP02, CP03, CP04, CP05, CP06, CP07, CP08, CP09, CP10, CP11, CP12, CP13, CP14, CP15, CP16, CP17, CP18, CP19, CP20, CP21, CP22, CP23, CP24, CP25, CP26, CP27, CP28, CP29, CP30, CP31, CP32, CP33, CP34, CP35, CP36, CP37, CP38, CP39, CP40, CP41, CP42, CP43, CP44, CP45, CP46, CP47, CP48, CP49, CP50, CP51, CP52, CP53, CP54, CP55, CP56, CP57, CP58, CP59, CP60, CP61, CP62, CP63, CP64, CP65, CP66, CP67, CP68, CP69, CP70, CP71, CP72, CP73, CP74, CP75, CP76, CP77, CP78, CP79, CP80, CP81, CP82, CP83, CP84, CP85, CP86, CP87, CP88, CP89, CP90, CP91, CP92, CP93, CP94, CP95, CP96, CP97, CP98, CP99, CP100

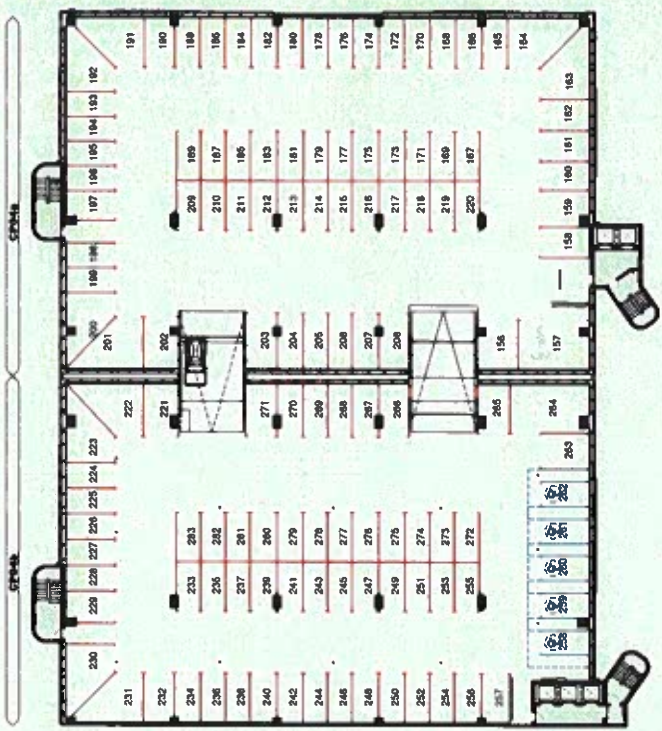
Midtown - New Coach & Car Park

Parking layout - 02 & 03

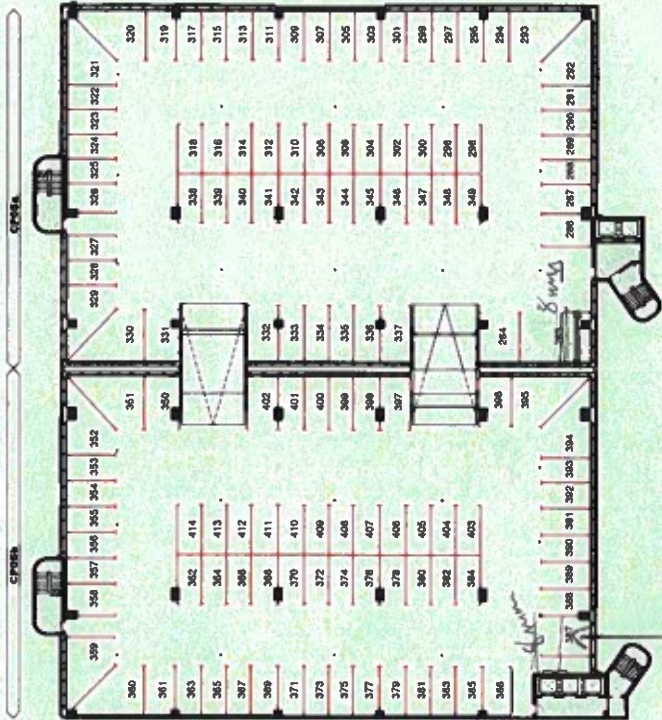
Drawn By	Checked By	Date
1270	401	18 May 18

Drawn Number: 1270 : 401

Answer to Question 134 Answer to Question 132



1. Parking layout - CP04a & CP04b
Scale: 1:250



2. Parking layout - CP05a & CP05b
Scale: 1:250

Item	Quantity	Unit	Notes
1. Suburban parking	100	m ²	
2. Public parking	50	m ²	
3. Private parking	20	m ²	
4. Electric car charging point (public)	5	points	
5. Accessible space (public)	2	spaces	

CONSTRUCTION

1. Midtown Coach & Car Park

2. Midtown Coach & Car Park

3. Midtown Coach & Car Park

4. Midtown Coach & Car Park

5. Midtown Coach & Car Park

6. Midtown Coach & Car Park

7. Midtown Coach & Car Park

8. Midtown Coach & Car Park

9. Midtown Coach & Car Park

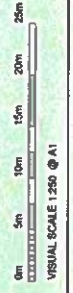
10. Midtown Coach & Car Park

Midtown Coach & Car Park

The Parking layout - 04 & 05

Issue No.	Date	Author	Checked By	Drawn By	Scale
1	18 Nov 14				1:250

Drawing Number: 1270 : 402



Answer to Question 134

Answer to Question 132

LEVEL / UNIT	OFFICIAL No.	PRICE
3A01	11	20000
3A01R	12	20000
3A02R	13	20000
3A02	14	20000
3A03 + Space	15	25000
3A05	16	20000
3A06	17	
3A07	18	
3A08	19	
3A09	20	20000
3A10	21	20000
3A11	22	20000
3A12	23	15000
3A13	24	17500
3A14	25	17500
3A15	26	15000
3A16	27	15000
3A17	28	15000
3A18	29	15000
3A19	30	15000
3A20	31	15000
3A21	32	15000
3A22	33	15000
3A23	34	15000
3A24	35	15000
3A25	36	15000
3A26	37	15000
3A27	38	20000
3A28	39	15000
3A29	40	15000
3A30	41	15000
3A31	42	15000
3A32	43	15000
3A33	44	20000
3A34	45	20000
3A35	46	20000
3A36	47	20000
3A37	48	20000
3A38	49	20000
3A39	50	20000
3A40	51	20000
3A41	52	20000
3A42	53	20000
3A43	54	20000
3A44 + Space	55	22500
3A45	56	22500
3A46	57	20000
3A47	58	20000
3A48	59	20000
3A49	60	20000

139 - 2500
529
264 - 22500
662 -

Answers to Question 134

Answers to Question 132

3A50	61	20000
3A51	62	20000
3A52	63	18000
3A53	64	18000
3A54	65	20000
3A55	66	20000
3A56	67	18000
3A57	68	20000
3A58	69	20000
3A59	70	20000
3A60	71	20000
3A61	72	20000
3A62	73	20000
3A63	74	20000
3A64	75	20000
3A65	76	20000
3A66	77	20000
3A67	78	20000
3A68	79	20000
3A69	80	20000
3A70	81	20000
3A71	82	20000
3A72	83	20000
3A73	84	20000
3A74	85	20000
3A75	86	20000
3A76	87	20000
3A77	88	20000
3A78	89	20000
3A79	90	20000
3A80	91	20000
3A81	92	20000
3A82	93	20000
3A83	94	20000
3A84	95	20000

Answer to Question 132

LEVEL / UNIT	OFFICIAL No.	PRICE
3B01	96	20000
3B02	97	22500
3B03	98	22500
3B04	99	20000
3B05	100	20000
3B06	101	20000
3B07	102	20000
3B08	103	20000
3B09	104	20000
3B10	105	22500
3B11	106	22500
3B12	107	20000
3B13	108	20000
3B14	109	20000
3B15	110	20000
3B16	111	20000
3B17	112	20000
3B18	113	20000
3B19	114	18000
3B20	115	20000
3B21	116	18000
3B22	117	20000
3B23	118	20000
3B24	119	20000
3B25	120	20000
3B26	121	20000
3B27	122	18000
3B28	123	20000
3B29	124	18000
3B30	125	20000
3B31	126	20000
3B32	127	20000
3B33	128	20000
3B34	129	20000
3B35	130	20000
3B36	131	20000
3B37	132	20000
3B44 + Space	139	25000
3B45	140	20000
3B46	141	20000
3B47	142	20000
3B48	143	20000
3B49	144	20000
3B50	145	20000
3B51	146	20000
3B52	147	20000
3B53	148	20000
3B54	149	20000
3B55	150	20000
3B56	151	20000

ANSWER TO QUESTION 134

ANSWER TO QUESTION 132

3B57	152	20000
3B58	153	20000
3B59	154	20000
3B60	155	20000

Answer to Question 134

Answer to Question 132

	OFFICIAL No.	PRICE
4A01	156	20000
4A02	157	22500
4A03	158	20000
4A04	159	20000
4A05	160	20000
4A06	161	20000
4A07	162	20000
4A08	163	22500
4A09	164	22500
4A10	165	20000
4A11	166	20000
4A12	167	20000
4A13	168	20000
4A14	169	20000
4A15	170	20000
4A16	171	20000
4A17	172	
4A18	173	20000
4A19	174	20000
4A20	175	20000
4A21	176	20000
4A22	177	20000
4A23	178	20000
4A24	179	20000
4A25	180	2000
4A26	181	20000
4A27	182	20000
4A28	183	20000
4A29	184	20000
4A30	185	20000
4A31	186	20000
4A32	187	20000
4A33	188	20000
4A34	189	20000
4A35	190	20000
4A36	191	22500
4A37	192	22500
4A38	193	20000
4A39	194	20000
4A40	195	20000
4A41	196	20000
4A42	197	20000
4A43	198	20000
4A44	199	20000
4A45 + space	200	22500
4A46 + space	201	22500
4A47	202	20000
4A48	203	20000
4A49	204	18000
4A50	205	20000

Answers to Question 134

Answers to Question 132

4A51	206	20000
4A52	207	18000
4A53	208	20000
4A54	209	20000
4A55	210	20000
4A56	211	20000
4A57	212	18000
4A58	213	18000
4A59	214	20000
4A60	215	20000
4A61	216	18000
4A62	217	18000
4A63	218	20000
4A64	219	20000
4A65	220	20000

Answer to Question 132

LEVEL / UNIT	OFFICIAL No.	PRICE
4B01	221	20000
4B02	222	22500
4B03	223	22500
4B04	224	20000
4B05	225	20000
4B06	226	20000
4B07	227	20000
4B08	228	20000
4B09	229	20000
4B10 + Corner	230	22500
4B11	231	22500
4B12	232	20000
4B13	233	20000
4B14	234	20000
4B15	235	20000
4B16	236	20000
4B17	237	20000
4B18	238	20000
4B19	239	18000
4B20	240	20000
4B21	241	18000
4B22	242	20000
4B23	243	20000
4B24	244	20000
4B25	245	20000
4B26	246	20000
4B27	247	18000
4B28	248	20000
4B29	249	20000
4B30	250	20000
4B31	251	18000
4B32	252	20000
4B33	253	2000
4B34	254	20000
4B35	255	20000
4B36	256	20000
4B37	257	20000
4B38	258	
4B39	259	
4B40	260	
4B41	261	
4B42	262	
4B43	263	22500
4B44	264	22500
4B45	265	20000
4B46	266	20000
4B47	267	18000
4B48	268	20000
4B49	269	20000
4B50	270	18000

ANSWERS TO QUESTION 134

Answers to Question 132

4B51	271	20000
4B52	272	20000
4B53	273	20000
4B54	274	20000
4B55	275	20000
4B56	276	20000
4B57	277	20000
4B58	278	20000
4B59	279	20000
4B60	280	20000
4B61	281	20000
4B62	282	20000
4B63	283	20000

ANSWERS TO QUESTION 134Answers to Question 132

LEVEL / UNIT	OFFICIAL No.	PRICE
5A01	284	22500
5A02	285	22500
5A04	286	20000
5A05	287	20000
5A06	288	20000
5A07	289	20000
5A08	290	20000
5A09	291	20000
5A10	292	22500
5A11	293	22500
5A12	294	20000
5A13	295	20000
5A14	296	20000
5A15	297	20000
5A16	298	
5A17	299	20000
5A18	300	20000
5A19	301	20000
5A20	302	20000
5A21	303	20000
5A22	304	20000
5A23	305	20000
5A24	306	
5A25	307	20000
5A26	308	
5A27	309	20000
5A28	310	20000
5A29	311	20000
5A30	312	20000
5A31	313	20000
5A32	314	20000
5A33	315	20000
5A34	316	20000
5A35	317	18000
5A36	318	20000
5A37	319	20000
5A38 & Space	320	22500
5A39	321	22500
5A40	322	20000
5A41	323	20000
5A42	324	20000
5A43	325	20000
5A44	326	20000
5A45	327	20000
5A46	328	20000
5A47 & Space	329	22500
5A48	330	22500
5A49	331	20000
5A50	332	20000
5A51	333	18000
5A52	334	20000
5A53	335	20000
5A54	336	18000
5A55	337	18000
5A56	338	20000
5A57	339	20000
5A58	340	20000
	341	18000

Answer to Question 134

Answer to Question 132

5A60	342	18000
5A61	343	20000
5A62	344	20000
5A63	345	18000
5A64	346	18000
5A65	347	20000
5A66	348	20000
5A67	349	20000

Answer to Question 132

LEVEL	CPS No.	PRICE
5B	350	20,000.00
5B	351	22,500.00
5B	352	22,500.00
5B	353	20,000.00
5B	354	20,000.00
5B	355	20,000.00
5B	356	20,000.00
5B	357	20,000.00
5B	358	20,000.00
5B	359	25,000.00
5B	360	20,000.00
5B	361	20,000.00
5B	362	18,000.00
5B	363	20,000.00
5B	364	20,000.00
5B	365	20,000.00
5B	366	20,000.00
5B	367	20,000.00
5B	368	18,000.00
5B	369	20,000.00
5B	370	18,000.00
5B	371	20,000.00
5B	372	20,000.00
5B	373	20,000.00
5B	374	20,000.00
5B	375	20,000.00
5B	376	18,000.00
5B	377	20,000.00
5B	378	18,000.00
5B	379	20,000.00
5B	380	20,000.00
5B	381	20,000.00
5B	382	20,000.00
5B	383	20,000.00
5B	384	18,000.00
5B	385	20,000.00
5B	386	20,000.00
5B	387	20,000.00
5B	388	20,000.00
5B	389	20,000.00
5B	390	20,000.00
5B	391	20,000.00
5B	392	20,000.00
5B	393	20,000.00
5B	394	22,500.00
5B	395	22,500.00
5B	396	20,000.00
5B	397	20,000.00
5B	398	18,000.00
5B	399	20,000.00
5B	400	20,000.00
5B	401	18,000.00
5B	402	20,000.00
5B	403	20,000.00
5B	404	20,000.00
5B	405	20,000.00
5B	406	20,000.00
5B	407	20,000.00

ANSWERS TO QUESTION 134

ANSWERS TO QUESTION 132

5B	408	20,000.00
5B	409	20,000.00
5B	410	20,000.00
5B	411	20,000.00
5B	412	20,000.00
5B	413	20,000.00
5B	414	20,000.00

ANSWERS TO QUESTION 134

Answer to Question 132

LEVEL / UIFFICIAL N PRICE

6A	417	20000
6A	418	22500
6A	419	-
6A	420	20000
6A	421	20000
6A	422	20000
6A	423	20000
6A	424	20000
6A	425	22500
6A	426	22500
6A	427	20000
6A	428	20000
6A	429	20000
6A	430	20000
6A	431	20000
6A	432	20000
6A	433	20000
6A	434	20000
6A	435	20000
6A	436	20000
6A	437	20000
6A	438	20000
6A	439	20000
6A	440	20000
6A	441	20000
6A	442	20000
6A	443	20000
6A	444	20000
6A	445	20000
6A	446	20000
6A	447	20000
6A	448	20000
6A	449	20000
6A	450	20000
6A	451	20000
6A	452	20000
6A	453	22500
6A	454	22500
6A	455	20000
6A	456	20000
6A	457	20000
6A	458	20000
6A	459	20000
6A	460	20000
6A	461	20000
6A	462	22500
6A	463	22500
6A	464	20000
6A	465	20000
6A	466	18000
6A	467	20000
6A	468	20000
6A	469	18000
6A	470	20000
6A	471	18000
6A	472	20000
6A	473	20000
6A	474	18000

Answers to Question 134

Answer to Question 132

6A	475	18000
6A	476	20000
6A	477	20000
6A	478	18000
6A	479	18000
6A	480	20000
6A	481	20000
6A	482	18000